

RESEARCH ARTICLE

Open Access



# Analysis of the role of the interleukins in colon cancer

Xiyi Wei<sup>1,2†</sup>, Yuan Zhang<sup>1†</sup>, Zhou Yang<sup>1†</sup>, Yeqin Sha<sup>2</sup>, Yitong Pan<sup>3</sup>, Yusheng Chen<sup>1\*</sup> and Lei Cai<sup>1\*</sup>

## Abstract

**Background:** The role of interleukin family in colon cancer remained controversial. The purpose of this study was to investigate the association between interleukin family and colon cancer progression through bioinformatics methods and to validate such association in clinical patients.

**Methods:** A total of 15 differentially expressed interleukins between the colon cancer tissue and normal colon tissue were evaluated from the Cancer Genome Atlas (TCGA) database with R software and only interleukin-7 (IL-7) was significantly associated with survival. The signaling pathway associated with IL-7 was then investigated using gene enrichment analysis. In addition, subsets of TNM were analyzed in detail and univariate and multivariate COX regression analysis were conducted. Finally, we performed western blotting, immunohistochemistry, cell proliferation and cell apoptosis analysis to examine the expression of IL-7 in patients with intestinal cancer.

**Results:** The study demonstrated that IL-7 could inhibit the progression of colon cancer. In addition, IL-7 was found to be associated with overall survival (OS) and pathological stage. Further analysis of IL-7 expression with clinical data indicated that IL-7 was a key factor in inhibiting colon cancer progression.

**Conclusion:** IL-7 was a key factor in inhibiting the progression of colon cancer and was closely related to overall survival.

**Keywords:** Colon cancer, Interleukins, Tumor progression

## Background

Colon cancer, a major malignancy of the alimentary canal, ranked third among malignant tumors in terms of morbidity worldwide [1, 2]. Relevant study revealed that more than 1 million people developed colon cancer each year, and the disease-specific mortality rate in developed countries was approximately 33% [3]. Mortality of colon cancer are on the rise due to changes in diet and lifestyle [4, 5]. Although colon cancer treatment options (e.g. surgery, chemoradiotherapy, and immunotherapy) have

been greatly improved, the 5-year survival rate remained as high as 50% [6].

Interleukins, a class of cytokines, were first discovered in the 1970s as a broader cellular messenger molecule family that allowed cells of the immune system to communicate with one another and produce coordinated, as well as specific responses to target antigens [7, 8]. In addition, interleukins had a variety of immunomodulatory functions that direct the maturation, differentiation, migration and adhesion of immune system cells [9, 10]. Previous studies have found that interleukins can regulate tumor microenvironment and participate in tumor development and progression [11–13]. However, the role of the entire interleukin family in colon cancer remained controversial. Therefore, it was necessary to probe the role of the interleukin family in the colon cancer micro-environment.

\*Correspondence: cys826228250@163.com; whzbxhgh@163.com; clpudongyiyuan@163.com

<sup>†</sup>Xiyi Wei, Yuan Zhang and Zhou Yang contributed equally to this work.

<sup>1</sup> Department of General Surgery, Shanghai Pudong Hospital, Fudan University Pudong Medical Center, 2800 Gongwei Road, Huinan Town, Pudong, 201399 Shanghai, China

Full list of author information is available at the end of the article



© The Author(s) 2020. This article is licensed under a Creative Commons Attribution 4.0 International License, which permits use, sharing, adaptation, distribution and reproduction in any medium or format, as long as you give appropriate credit to the original author(s) and the source, provide a link to the Creative Commons licence, and indicate if changes were made. The images or other third party material in this article are included in the article's Creative Commons licence, unless indicated otherwise in a credit line to the material. If material is not included in the article's Creative Commons licence and your intended use is not permitted by statutory regulation or exceeds the permitted use, you will need to obtain permission directly from the copyright holder. To view a copy of this licence, visit <http://creativecommons.org/licenses/by/4.0/>. The Creative Commons Public Domain Dedication waiver (<http://creativecommons.org/publicdomain/zero/1.0/>) applies to the data made available in this article, unless otherwise stated in a credit line to the data.

The Cancer Genome Atlas (TCGA) was regarded as the largest cancer database, containing samples of more than 20,000 primary cancers and normal matched samples of multiple cancer types. Therefore, we can investigate tumor gene data in greater depth with bioinformatics methods. Further, it can be linked to clinical data in order to obtain more valuable and meaningful results [14]. To assess the association between the interleukin family and progression of colon cancer, our study analyzed the mRNA expression of colon adenocarcinoma in TCGA by R software and validated it in clinical patients.

## Materials and methods

### TCGA data acquisition and differentially expressed interleukin gene analysis

The colon adenocarcinoma data in TCGA contained 480 colon cancer cases and 41 paracancerous control cases with basic information, including age, gender, tumor pathologic stage, and Tumor & Lymph Node & Metastasis (TNM) stage (Table 1). All mRNA expression data were downloaded and further analyzed by R software along with clinical data.

We used the R software “Limma” package to normalize the original expression levels of mRNAs downloaded from TCGA. “Limma” package was then further utilized to analyze the expression of each interleukin gene

between cancer and normal tissues, setting  $P < 0.05$  as the filter condition for differentially expressed interleukin.

### Gene set enrichment analysis of colon cancer

Gene enrichment analysis (GSEA) (version 3.0, the broad institute of MIT and Harvard, <http://software.broadinstitute.org/gsea/downloads.jsp>) was conducted between colon cancer and paracancerous normal tissues to study the biological characteristics of colon cancer. In detail, the “collapse data set to gene symbols” was set to false, the number of marks was set to 1000, the “permutation type” was set to phenotype, the “enrichment statistic” was set to weighted, and the Signal2Noise metric was used for ranking genes. High expression group and low expression group was used as experimental group and reference group. “c2.cp.kegg.v7.0.symbols.gmt” gene sets database was used for enrichment analysis. Gene set size  $> 500$  and  $< 15$ , FDR  $< 0.25$ , and nominal  $P$  value  $< 0.05$  were regarded as the cut-off criteria.

### Overall survival curve and TNM subsets analysis

Based on the TCGA database, OS curves was drawn by the R software through Kaplan–Meier analysis.  $P < 0.05$  was considered to be significant for the impact of OS. The association between each subset of TNM and IL-7 was analyzed by R software based on the TCGA database via the Wilcox test. The 7th edition of the TNM stage system 23 was adopted, and Mx was defined as unable to evaluate the presence or absence of distant metastasis.

**Table 1 Clinical characteristics of patients**

T stage	
T1	8
T2	66
T3	272
T4	46
M stage	
M0	330
M1	62
N stage	
N0	235
N1	89
N2	68
Age	
≤ 65	152
> 65	240
Gender	
Female	186
Male	206
Stage	
Stage I	67
Stage II	160
Stage III	103
Stage IV	62

### Immunohistochemical (IHC) staining

IHC was performed on paraffin-embedded sections. The sections were deparaffinized in xylene and hydrated with decreasing concentrations of ethanol (100, 90, 80, 75%) for 3 min each time and microwaved-heated in sodium citrate buffer for antigen retrieval. Then, the sections were blocked in 5% BSA and incubated with anti-IL-7 rabbit polyclonal antibody (1:100, R&D Systems, MN, USA) at 4 °C overnight. Next, the sections were treated with horseradish peroxidase (HRP)-conjugated rabbit secondary antibody (1:200; ProteinTech Group) for 60 min at room temperature; then, 3,3'-diaminobenzidine development (DAB Substrate Chromogen System; Dako) and hematoxylin staining were performed. The sections were fixed and images were obtained with inverted microscope (Olympus IX71, Japan).

### Cell Lines and reagents

The human colon cancer cell line HCT116 and RKO were purchased from the University of Colorado Cancer Center Cell Bank and cultured in RPMI 1640 medium supplemented with 10% FBS (Invitrogen, Carlsbad, CA, USA) at 37 °C in a 5% CO<sub>2</sub> atmosphere. Cells were

digested and passaged when cell fusion reached 80%. Recombinant Human IL-7 Protein (rhIL-7) was purchased from R&D Systems (MN, USA). The working concentration was 100 nM.

#### Protein extraction and western blotting analysis

Total protein of the cells in each group was extracted using RIPA extraction reagents with 1% phenylmethanesulfonyl fluoride (PMSF) as well as 1% DL-Dithiothreitol (DTT). The concentration of the lysate protein was detected by a BCA protein assay kit (Beyotime Biotechnology). Equal amounts (20 µg) of protein, as determined with BCA protein assay kit (Thermo Fisher Scientific, USA) were separated by 10% SDS-PAGE. The proteins were then transferred to PVDF membranes (0.45 mm; Beijing Solarbio Science & Technology Co., China). The membranes were blocked with 5% BSA for 1 h at room temperature and then incubated with IL-7 rabbit polyclonal antibody (1:1000, R&D Systems, MN, USA) antibodies at 4 °C for 12 h. GAPDH rabbit polyclonal antibodies (1:4000, Proteintech, USA) were used as loading controls and normalization. The secondary antibody anti-rabbit antibodies conjugated to HRP (1:4000; ProteinTech Group) were incubated for approximately 1 h at room temperature. Finally, the bands were visualized with ECL reagents (Thermo Fisher Scientific) and Omega Lum G machine (Aplegen, USA).

#### Flow cytometry

For cell apoptosis assay,  $2 \times 10^5$  cells were harvested and washed with PBS for 3 times. Then the samples were resuspended in 100 µl of binding buffer, stained with 5 µl of Annexin-V and propidium iodide (PI), and stored at room temperature for 20 min in the dark. Subsequent to staining, additional 400 µl binding buffer was added in sample and resuspended. Analysis were performed with flow cytometry (Becton–Dickinson, Bedford, MA, USA).

#### Cell proliferation assay

$3 \times 10^3$  cells suspended in 100 µl RPMI-1640 medium were seed into 96-well plate. The cell proliferation was assessed by the CCK8 (Dojindo Molecular Technologies, Japan). 10 µl CCK8 solution was given to each well of the plate after different incubation times: 0 h, 24 h, 48 h and 72 h. Finally, we measured the absorbance at 450 nm wavelength after 2 h incubation.

#### Cell invasion assay

Cell invasion was analyzed with transwell plates (24-well insert, 8 µm pore size; BD Biosciences, Bedford, MA, USA). The filters (Corning Inc., USA) were coated with 55 µL Matrigel (1:8 dilution; BD Biosciences). The  $10^4$  cells were suspended in 100 µl RPMI-1640 medium

without serum and seeded in the upper chamber. Next, 600 µl 90% RPMI-1640 supplement with 10% FBS was added to the bottom chamber. After incubation for 24 h, the chambers were fixed by 4% paraformaldehyde for 30 min and then stained by 0.1% crystal violet for 30 min. At last, we used a magnification microscope to count the amount of the invasion cells in the bottom of the chamber.

#### Statistical analysis

The experiments in this article were performed in triplicate, and the data were expressed as mean ± standard deviation. A t-test was utilized for the statistical analysis of the data from 2 groups. The comparisons of multiple groups were performed with one-way ANOVA followed by an LSD-t test.  $P < 0.05$  was considered to be significant.

## Results

### Differentially expressed interleukin genes screening and OS analysis

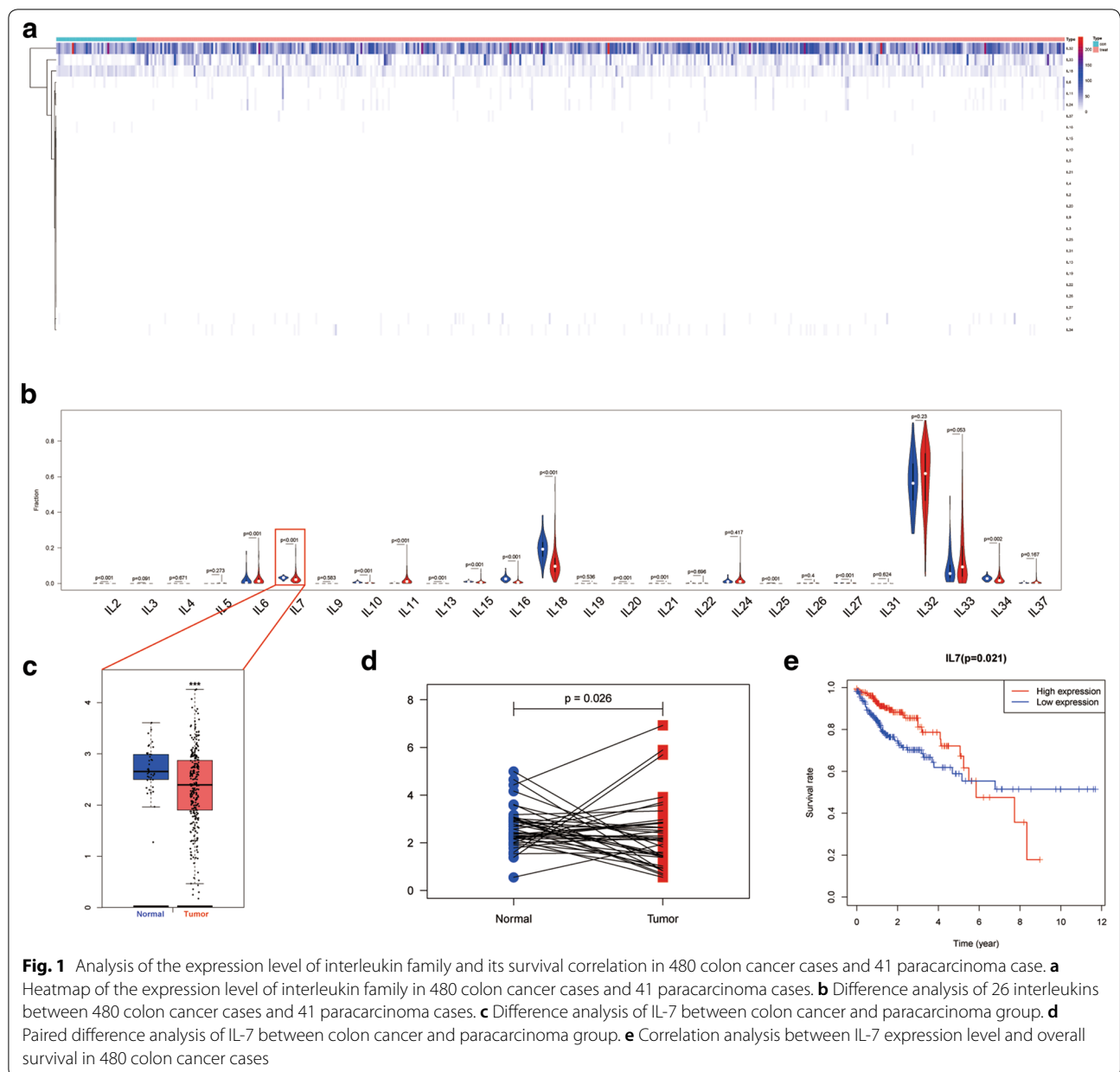
The expression level of the interleukin family genes was shown in Fig. 1a. R software was utilized to screen differentially expressed interleukin gene extracted from TCGA-COAD. In total, 15 interleukins were differentially expressed between colon cancer and paracancerous tissues, 11 interleukins showed no difference in expression, and 12 were almost non-expressed (Fig. 1b, Table 2). All differentially expressed interleukins were correlated with clinical data of TCGA-COAD for further analyzing OS via R software. We finally found that interleukin 7 was significantly down-regulated in colon cancer compared with normal tissue (Fig. 1c, d). Meanwhile, its down-regulation was significantly associated with worse overall survival (Fig. 1e).

### Gene set enrichment analysis of IL-7

To explore how IL-7 was involved in colon cancer progression, we performed a GSEA based on the TCGA colon cancer cohort. A total of 100 significant genes were obtained from GSEA and genes with positive correlations were mapped. Further, we found the most important pathways involved in IL-7, including intestinal immune network for IgA production, apoptosis, natural killer, Autoimmune, JAK, P53 signaling pathway, a series of pathways associated with the development of colon cancer. The details were illustrated in Fig. 2a, b.

### TNM subsets analysis

The association between each subset of TNM and IL-7 was analyzed by R software via the Wilcox test.  $P < 0.05$  was considered to be statistically significant. We found that the expression level of IL-7 continuously stepwise decreased in each subgroup of TNM, except for the



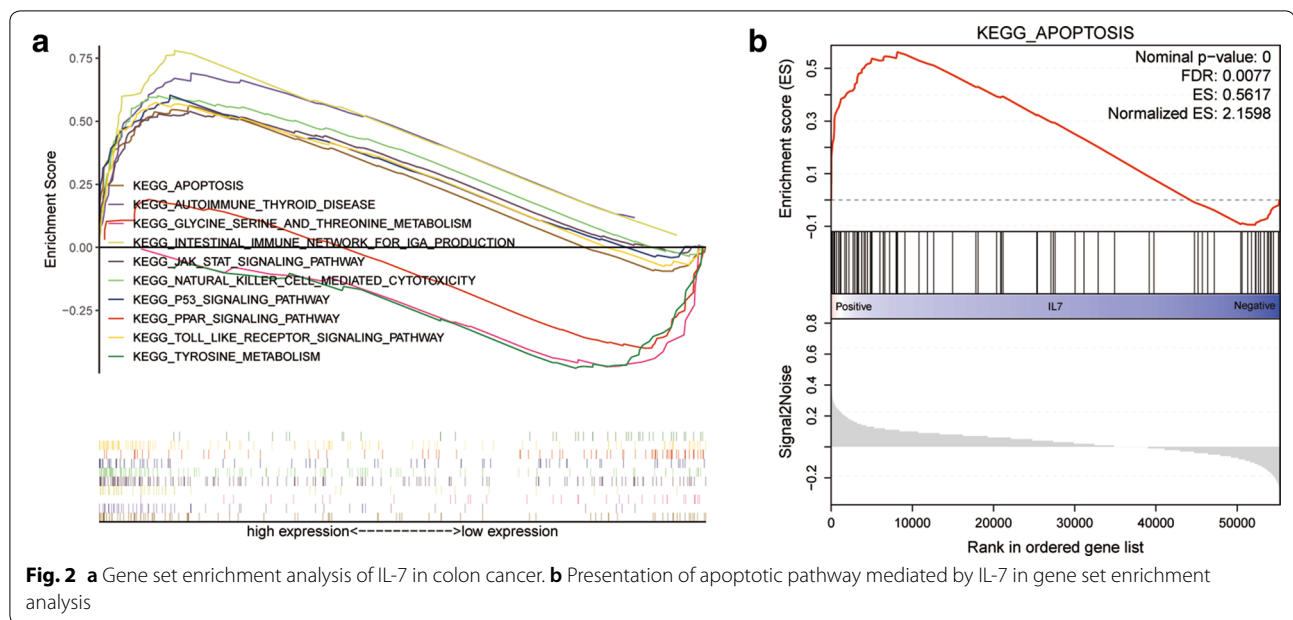
**Fig. 1** Analysis of the expression level of interleukin family and its survival correlation in 480 colon cancer cases and 41 paracarcinoma case. **a** Heatmap of the expression level of interleukin family in 480 colon cancer cases and 41 paracarcinoma cases. **b** Difference analysis of 26 interleukins between 480 colon cancer cases and 41 paracarcinoma cases. **c** Difference analysis of IL-7 between colon cancer and paracarcinoma group. **d** Paired difference analysis of IL-7 between colon cancer and paracarcinoma group. **e** Correlation analysis between IL-7 expression level and overall survival in 480 colon cancer cases

**Table 2 Screening of differentially expressed interleukin genes between cancer and normal tissue groups**

Significant expressed	IL-2, IL-6, IL-7, IL-10, IL-11, IL-13, IL-15, IL-16, IL-18, IL-20, IL-21, IL-25, IL-27, IL-33, IL-34
Insignificant expressed	IL-3, IL-4, IL-5, IL-9, IL-19, IL-22, IL-24, IL-26, IL-31, IL-32, IL-37
Non-expressed	IL-1, IL-8, IL-12, IL-14, IL-17, IL-23, IL-28, IL-29, IL-30, IL-35, IL-36, IL-384

MX group. In the tumor stage, IL-7 gradually decreased in the subgroup but there was no statistical difference (Fig. 3a). Conversely, we found that IL-7 decreased significantly between subgroups during the node stage (Fig. 3b). In the metastatic stage, IL-7 increased in

the Mx phase compared to the M1 phase, but overall IL-7 was statistically different in the metastatic stage (Fig. 3c). In the pathological stage, IL-7 expression gradually decreased and was statistically different (Fig. 3d).



### Univariate and multivariate COX regression analysis

Cox's proportional hazards model was applied to analyze related factors that may affect the overall survival of colon cancer patients. In both univariate and multivariate analysis, high expression of IL-7 suggested better OS. In univariate analysis, the P-value was 0.003, the hazard ratio (HR) was 0.558, and the 95% confidence interval (CI) was 0.377–0.824. In multivariate analysis, the P-value was 0.022, the HR was 0.611, and the 95% CI was 0.401–0.932 (Fig. 4a, b). Further, based on the results of multivariate cox regression analysis, we established a nomogram model that may predict patients' survival (Fig. 4c).

### IL-7 expression in clinical patients and function in cell line

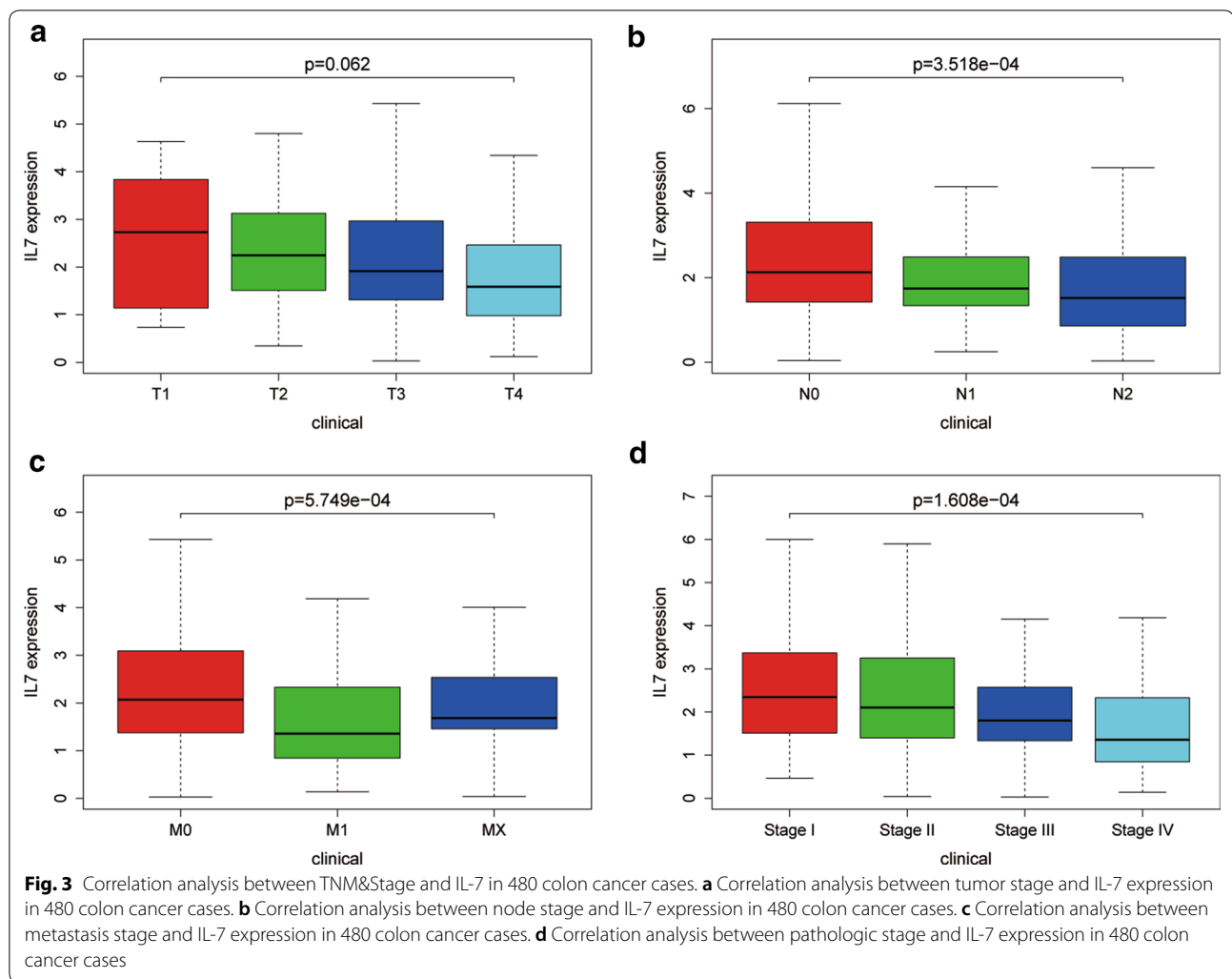
For further exploration of IL-7 expression in clinical colon cancer patients, Western Blotting and IHC were performed. As expected, IL-7 protein was significantly decreased in early stage colon cancer compared with paired normal tissue, meanwhile the expression of IL-7 in advanced stage colon cancer showed further decrease (Fig. 5a, b). As predicted in GSEA analysis above, we inferred IL-7 promotes apoptosis of colon cancer to repress its progression. In cell proliferation analysis, treatment of rhIL-7 (100 ng/ml, 48 h) significantly decreased the growth of HCT116 and RKO at both 48 and 72 h (Fig. 5c). In cell apoptosis analysis, rhIL-7 significantly increased the apoptosis rate of HCT116 and RKO (Fig. 5d). In addition, we further

investigated the effect of rhIL-7 at cell invasion ability, whereas no significant change was found (Fig. 5e).

### Discussion

In the past few years, despite great efforts in colon cancer research, there has been no significant improvement in the 5-year survival rates. Patients with early and unadvanced colon cancer had a better prognosis and can be cured by surgery combined with adjuvant therapy. However, the majority of patients with advanced colon cancer can not undergo a surgical resection alone [15] and the chemotherapy or palliative treatment was the only option for them. Therefore, it was crucial for advanced colon cancer patients to explore more effective prognosis markers and therapeutic targets. To this end, we screened the interleukin family by bioinformatics methods and performed a differential analysis. Interleukins associated with colon cancer progression and survival were further analyzed and eventually validated in clinical patient samples.

In the initial analysis results, 15 interleukins were identified as differentially expressed interleukins between colon cancer and paracancerous tissues. Further analysis confirmed that only IL-7 was associated with cancer progression, accounting for 2.63%. Although the amount of differentially expressed interleukins between the tumor and paracancerous tissue was large, the majority of of them may be meaningless or of little significance, and only a fraction was actually related to the development of the tumor. Therefore, only IL-7 was studied by gene

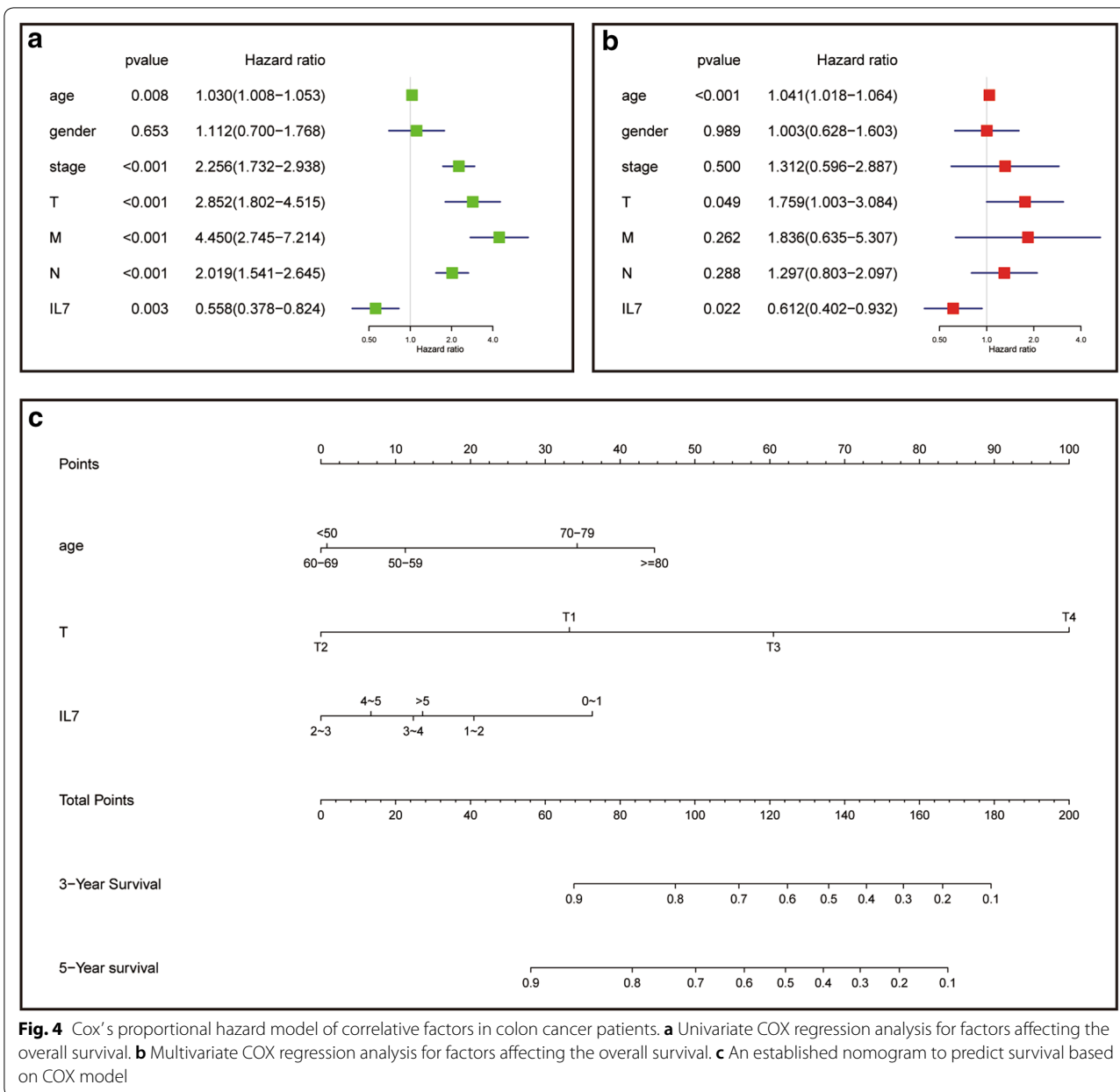


enrichment analysis to evaluate its cellular composition, molecular function and biological characteristics.

In gene set enrichment analysis, Intestinal immune network for IgA production pathway has been shown to be the most relevant pathway for IL-7. Previously, Yang et al. [16] evaluated the function of APOBEC3F gene and intestinal immune network for IgA production pathway in the biological process of hepatocellular carcinoma (HCC). Intestinal immune network for IgA production pathway activated by APOBEC3F may lead to malignant biological behavior of HCC cells by up-regulating pIgR, CCR9, CCR10 and CXCR4 protein levels. This was inconsistent with our results, while intestinal immune pathway played a positive role in inhibiting cancer in our study. Apoptosis was the most important mechanism for inhibiting tumor growth and played an important role in tumorigenesis and immune response. Therefore, we performed a further analysis of the IL-7-mediated apoptosis pathway. Previous studies [17–19] have shown that

several biologically active substances could induce tumor cell apoptosis, inhibiting tumor progression by modulating pro-apoptotic proteins and apoptotic proteins (Bax, Bcl-xl) and increasing caspase expression and activation (CASP3, CASP8, CASP9). IL-7 may inhibit the development of colon cancer cells through apoptotic pathway.

We further analyzed the association of IL-7 with survival and TNM. It was found that IL-7 was significantly associated with survival and showed a continuous gradual decline in each subset of TNM. The IL-7 receptor was IL-7R, which, when combined, may results in activation of JAK1 or JAK3, followed by activation of many downstream signaling pathways, including STAT5a/b, PI3 kinase and SRC kinase [20–25]. Further, IL-7 treatment can enhance long-term tumor antigen-specific CD8+ T cell response and greatly prolong the survival of tumor patients [26, 27]. We finally verified the expression of IL-7 in clinical patients and found that IL-7 was significantly down-expressed in colon cancer tissues compared



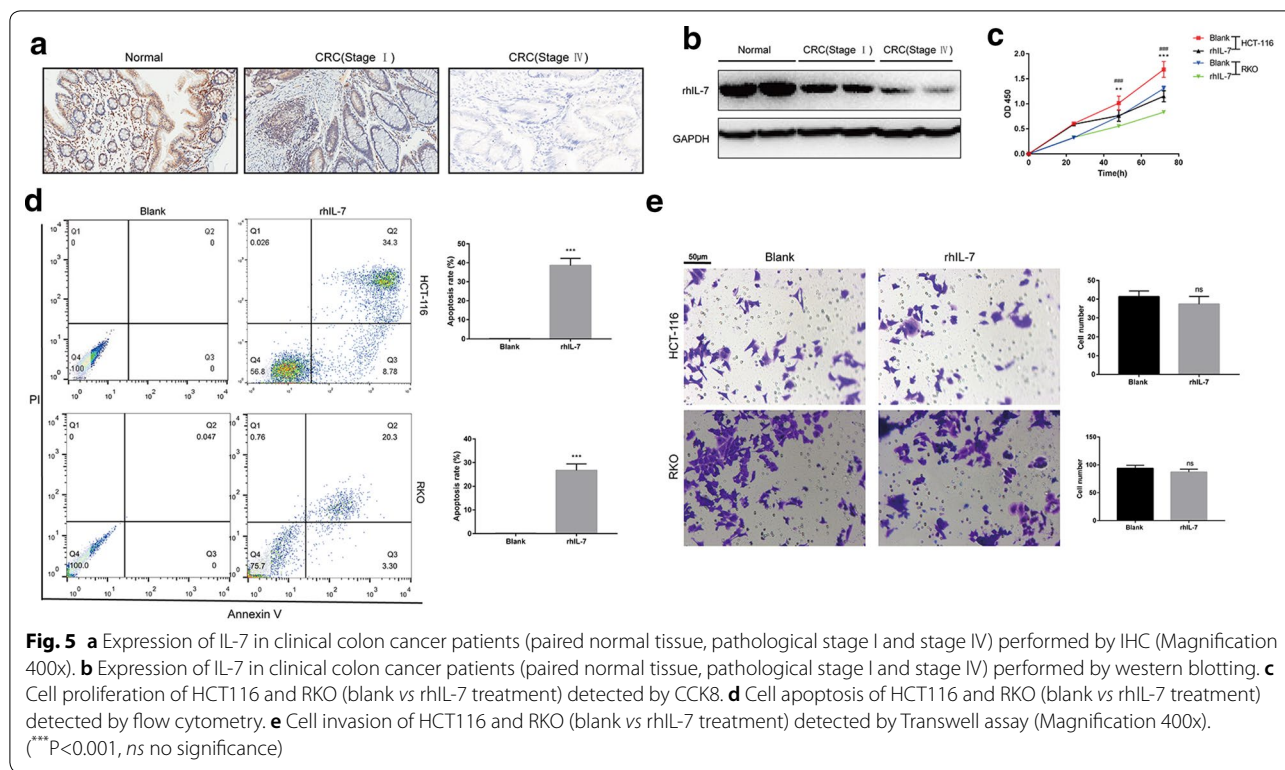
to normal tissues. In the proportional risk model of Cox, high expression of IL-7 indicated a better OS. High expression of IL-7 also showed a negative association with tumor progression in the TNM subgroup analysis.

In another research focused on the role of IL-7 in the progression of colon cancer, the apoptosis of tumor cells treated with combination of OXP and IL-7 was significantly increased, indicating that IL-7 combined with OXP can significantly reduce cell proliferation and induce apoptosis in vivo [28]. Nevertheless, the use of IL-7 alone had no effect on tumor growth in mice, and IL-7 was unlikely to have a direct effect on tumors.

Similarly, both of our results confirmed the role of IL-7 in inhibiting tumor progression. However, our results show that IL-7 itself may inhibit the progression of intestinal cancer through the apoptotic pathway.

### Conclusion

In summary, we successfully revealed several significant interleukins for the diagnosis and prognosis of advanced colon cancer. IL-7 was the most meaningful one among them and had been verified in clinical



patients. Moreover, the mechanism by which IL-7 inhibited the progression of intestinal cancer required further research.

**Abbreviations**

TCGA: The Cancer Genome Atlas; IL-7: Interleukin-7; OS: Overall survival; TNM: Tumor & Lymph Node & Metastasis; GSEA: Gene enrichment analysis; rhIL-7: Recombinant human IL-7 protein; HR: Hazard ratio; CI: Confidence interval.

**Acknowledgements**

None.

**Authors' contributions**

XW and YZ contributed to the experiments performing. ZY and YS contributed to the statistical analysis of the data. YP contributed to the specimens collection. YC and LC contributed to the design of the study. All authors read and approved the final version of the manuscript. All authors read and approved the final manuscript.

**Funding**

The present study was funded by Scientific Research Foundation provided by Pudong Hospital affiliated to Fudan University (Yusheng Chen, Grant No. YJ2020-01).

**Availability of data and materials**

The datasets used and analyzed during the current study are available from the corresponding author on reasonable request.

**Ethics approval and consent to participate**

All procedures involving human participants were performed in accordance with Shanghai Pudong Hospital ethical committee and with the 1964 Declaration of Helsinki and its later amendments or comparable ethical standards.

All patients provided their written informed consent. The study protocol was approved by the Pudong Hospital Committee on human research.

**Consent for publication**

Written informed consent for publication was obtained from all the participants.

**Competing interests**

The authors have no conflicts of interest to declare.

**Author details**

<sup>1</sup> Department of General Surgery, Shanghai Pudong Hospital, Fudan University Pudong Medical Center, 2800 Gongwei Road, Huinan Town, Pudong, 201399 Shanghai, China. <sup>2</sup> First Clinical Medical College of Nanjing Medical University, 210029 Nanjing, China. <sup>3</sup> Department of Bioinformatics, School of Biomedical Engineering and Informatics, Nanjing Medical University, 211116 Nanjing, China.

Received: 6 November 2019 Accepted: 28 April 2020

Published online: 07 May 2020

**References**

- Freeman HJ. Early stage colon cancer. *World J Gastroenterol.* 2013;19(46):8468–73.
- Siegel RL, Miller KD, Jemal A. Cancer Statistics, 2017. *CA Cancer J Clin.* 2017;67(1):7–30.
- Cunningham D, Atkin W, Lenz HJ, et al. Colorectal cancer. *Lancet.* 2010;375(9719):1030–47.
- Chow CJ, Al-Refai WB, Abraham A, et al. Does patient rurality predict quality colon cancer care? A population-based study. *Dis Colon Rectum.* 2015;58(4):415–22.
- Birt DF, Phillips GJ. Diet, genes, and microbes: complexities of colon cancer prevention. *Toxicol Pathol.* 2014;42(1):182–8.



6. Ferlay J, Soerjomataram I, Dikshit R, et al. Cancer incidence and mortality worldwide: sources, methods and major patterns in GLOBOCAN 2012. *Int J Cancer*. 2015;136(5):E359–86.
7. Yoshimoto T, Morishima N, Okumura M, Chiba Y, Xu M, Mizuguchi J. Interleukins and cancer immunotherapy. *Immunotherapy*. 2009;1(5):825–44.
8. Akdis M, Burgler S, Cramer R, et al. Interleukins, from 1 to 37, and interferon-gamma: receptors, functions, and roles in diseases. *J Allergy Clin Immunol*. 2011;127(3):701–721.e701–770.
9. Rutz S, Ouyang W. Regulation of interleukin-10 and interleukin-22 expression in T helper cells. *Curr Opin Immunol*. 2011;23(5):605–12.
10. Sahoo A, Im SH. Interleukin and interleukin receptor diversity: role of alternative splicing. *Int Rev Immunol*. 2010;29(1):77–109.
11. Zarogoulidis P, Lampaki S, Yarmus L, et al. Interleukin-7 and interleukin-15 for cancer. *J Cancer*. 2014;5(9):765–73.
12. Voronov E, Carmi Y, Apte RN. The role IL-1 in tumor-mediated angiogenesis. *Front Physiol*. 2014;5:114.
13. Drexler SK, Yazdi AS. Complex roles of inflammasomes in carcinogenesis. *Cancer J*. 2013;19(6):468–72.
14. Yuzhalin AE, Urbonas T, Silva MA, Muschel RJ, Gordon-Weeks AN. A core matrisome gene signature predicts cancer outcome. *Br J Cancer*. 2018;118(3):435–40.
15. Moriarty A, O'Sullivan J, Kennedy J, Mehigan B, McCormick P. Current targeted therapies in the treatment of advanced colorectal cancer: a review. *Ther Adv Med Oncol*. 2016;8(4):276–93.
16. Yang Z, Tao Y, Xu X, Cai F, Yu Y, Ma L. Bufalin inhibits cell proliferation and migration of hepatocellular carcinoma cells via APOBEC3F induced intestinal immune network for IgA production signaling pathway. *Biochem Biophys Res Commun*. 2018;503(3):2124–31.
17. Liu G, Song Y, Cui L, Wen Z, Lu X. Inositol hexaphosphate suppresses growth and induces apoptosis in HT-29 colorectal cancer cells in culture: PI3K/Akt pathway as a potential target. *Int J Clin Exp Pathol*. 2015;8(2):1402–10.
18. Kapral M, Wawrszczyk J. Inositol hexaphosphate inhibits proliferation and induces apoptosis of colon cancer cells by suppressing the AKT/mTOR signaling pathway. *Molecules*. 2017;22(10):1657.
19. Shafie NH, Esa NM, Ithnin H, Saad N, Pandurangan AK. Pro-apoptotic effect of rice bran inositol hexaphosphate (IP6) on HT-29 colorectal cancer cells. *Int J Mol Sci*. 2013;14(12):23545–58.
20. Gao X, Wang X, Yang Q, et al. Tumoral expression of IL-33 inhibits tumor growth and modifies the tumor microenvironment through CD8 + T and NK cells. *J Immunol*. 2015;194(1):438–45.
21. Kondo M, Takeshita T, Higuchi M, et al. Functional participation of the IL-2 receptor gamma chain in IL-7 receptor complexes. *Science*. 1994;263(5152):1453–4.
22. Noguchi M, Nakamura Y, Russell SM, et al. Interleukin-2 receptor gamma chain: a functional component of the interleukin-7 receptor. *Science*. 1993;262(5141):1877–80.
23. Ziegler SE, Morella KK, Anderson D, et al. Reconstitution of a functional interleukin (IL)-7 receptor demonstrates that the IL-2 receptor gamma chain is required for IL-7 signal transduction. *Eur J Immunol*. 1995;25(2):399–404.
24. Asao H, Okuyama C, Kumaki S, et al. Cutting edge: the common gamma-chain is an indispensable subunit of the IL-21 receptor complex. *J Immunol*. 2001;167(1):1–5.
25. Ozaki K, Kikly K, Michalovich D, Young PR, Leonard WJ. Cloning of a type I cytokine receptor most related to the IL-2 receptor beta chain. *Proc Natl Acad Sci USA*. 2000;97(21):11439–44.
26. Colombetti S, Levy F, Chapatte L. IL-7 adjuvant treatment enhances long-term tumor-antigen-specific CD8 + T-cell responses after immunization with recombinant lentivector. *Blood*. 2009;113(26):6629–37.
27. Li B, VanRoey MJ, Jooss K. Recombinant IL-7 enhances the potency of GM-CSF-secreting tumor cell immunotherapy. *Clin Immunol*. 2007;123(2):155–65.
28. Gou HF, Huang J, Shi HS, Chen XC, Wang YS. Chemo-immunotherapy with oxaliplatin and interleukin-7 inhibits colon cancer metastasis in mice. *PLoS ONE*. 2014;9(1):e85789.

### Publisher's Note

Springer Nature remains neutral with regard to jurisdictional claims in published maps and institutional affiliations.

Ready to submit your research? Choose BMC and benefit from:

- fast, convenient online submission
- thorough peer review by experienced researchers in your field
- rapid publication on acceptance
- support for research data, including large and complex data types
- gold Open Access which fosters wider collaboration and increased citations
- maximum visibility for your research: over 100M website views per year

At BMC, research is always in progress.

Learn more [biomedcentral.com/submissions](https://biomedcentral.com/submissions)

