


CORRECTION

Open Access



Correction to: Effects of enriched-potassium diet on cardiorespiratory outcomes in experimental non-ischemic chronic heart failure

Karla G. Schwarz¹, Katherin V. Pereyra¹, Camilo Toledo^{1,2}, David C. Andrade^{1,3}, Hugo S. Díaz¹, Esteban Díaz-Jara¹, Domiziana Ortolani¹, Angélica Rios-Gallardo^{1,2}, Paulina Arias¹, Alexandra Las Heras¹, Ignacio Vera¹, Fernando C. Ortiz⁴, Nivaldo C. Inestrosa^{2,6}, Carlos P. Vio^{5,6} and Rodrigo Del Rio^{1,2,6*} 

Correction to: *Biological Research* (2021) 54:43

<https://doi.org/10.1186/s40659-021-00365-z>

Following publication of the original article [1], the Figs. 2, 3 and 4 are misplaced. The correct order of figures is given in this erratum (Figs. 1, 2, 3, 4, 5, 6).

The original article has been corrected.

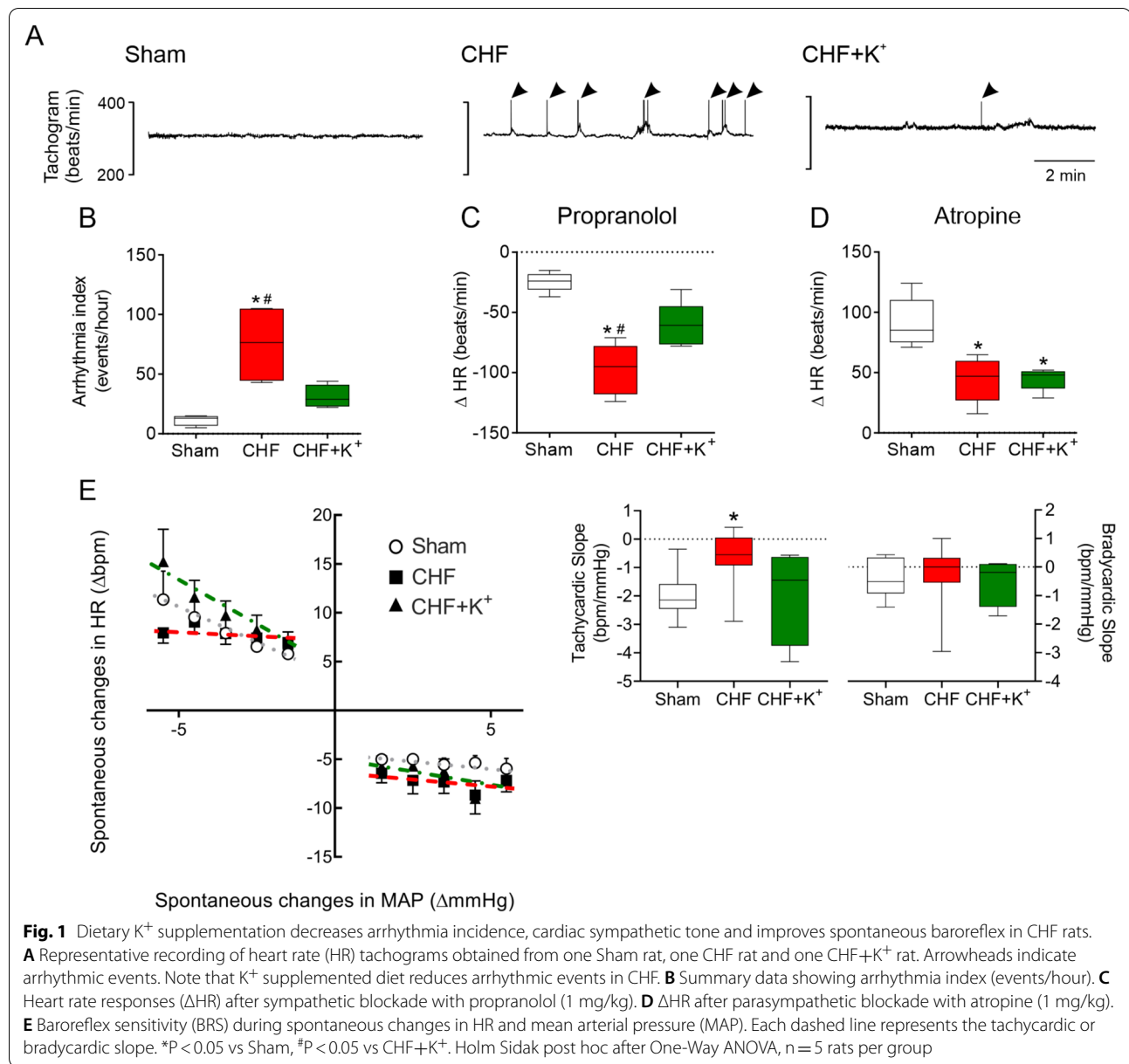
The original article can be found online at <https://doi.org/10.1186/s40659-021-00365-z>.

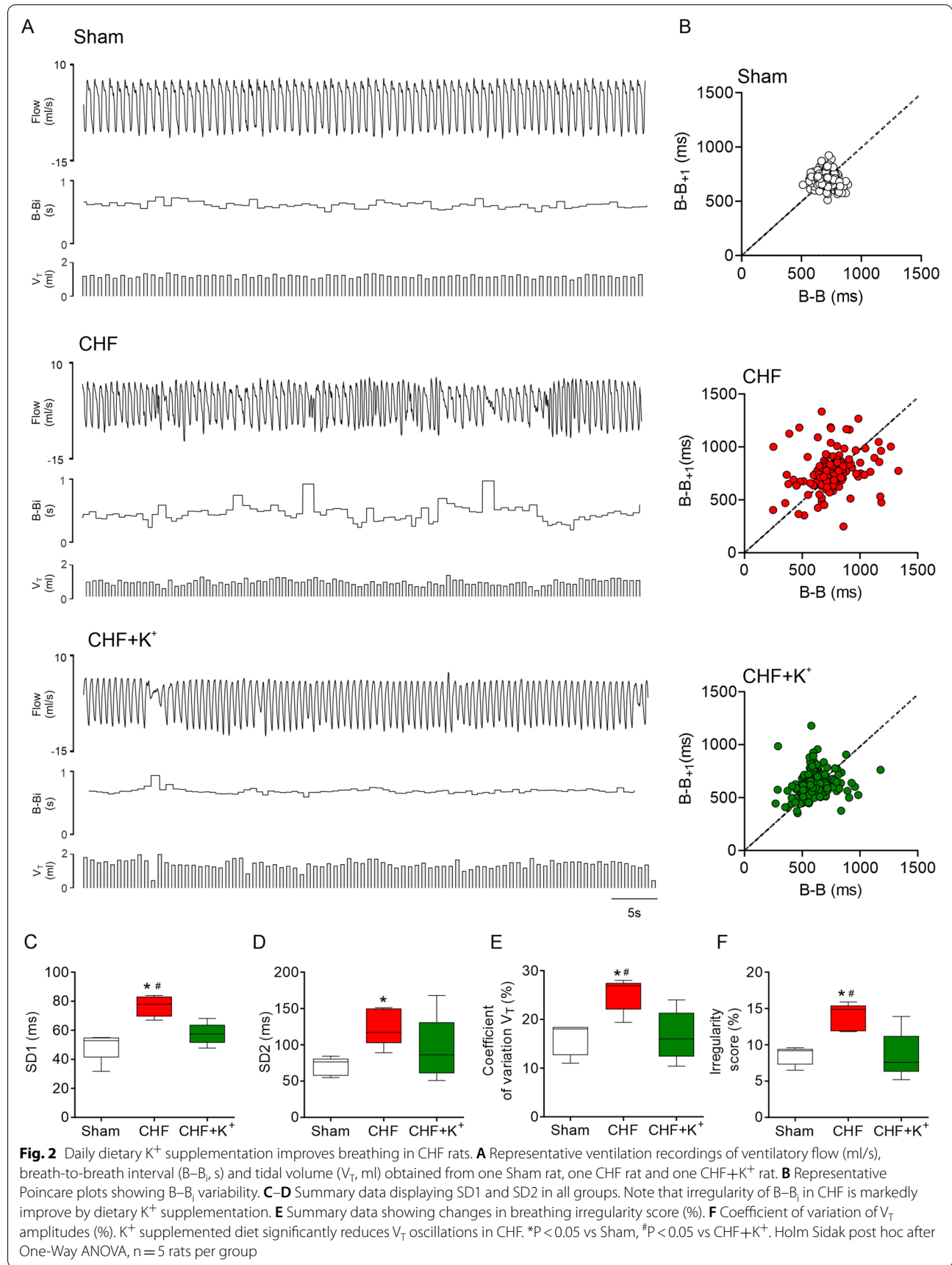
*Correspondence: rdelrio@bio.puc.cl

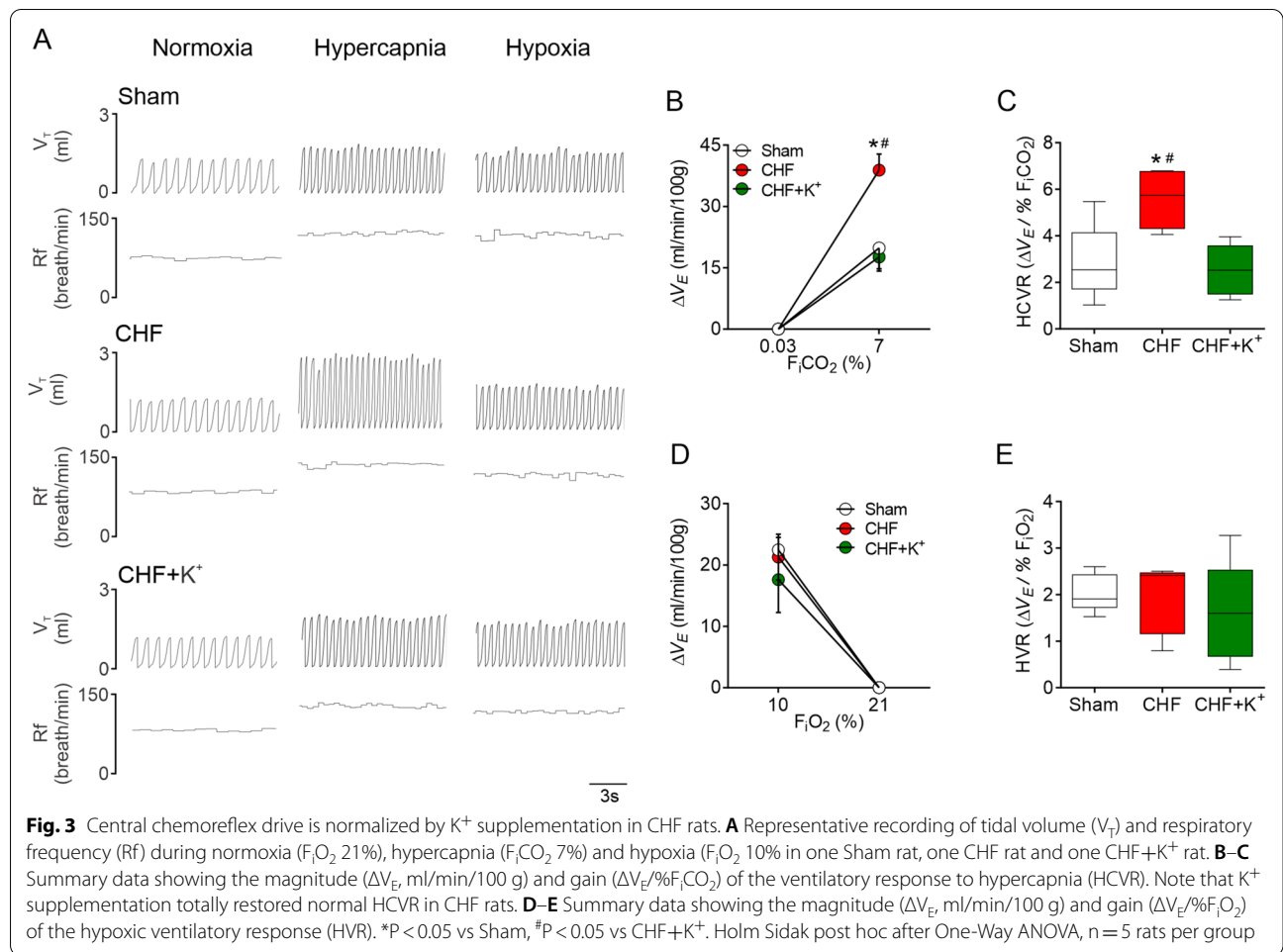
¹ Laboratory of Cardiorespiratory Control, Department of Physiology, Pontificia Universidad Católica de Chile, Santiago, Chile
Full list of author information is available at the end of the article

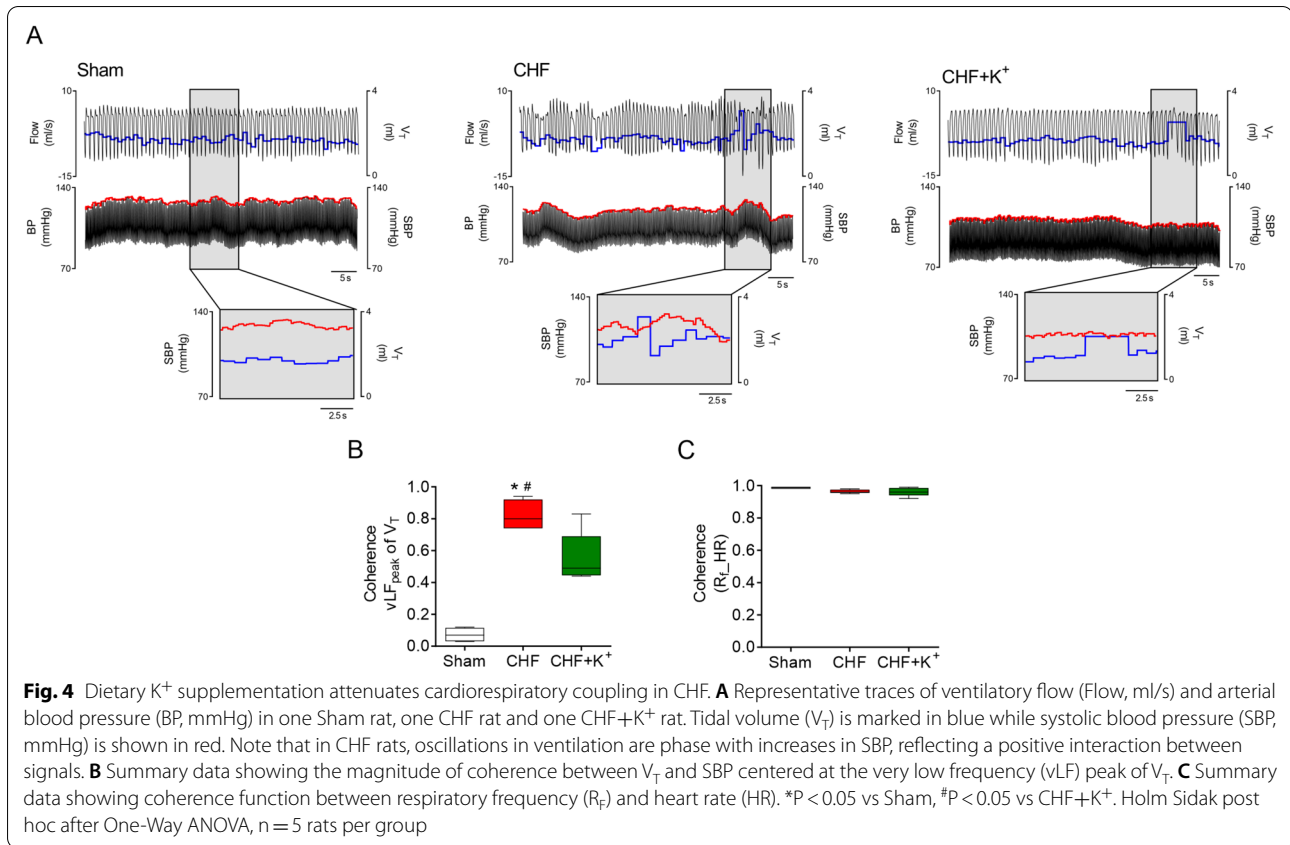


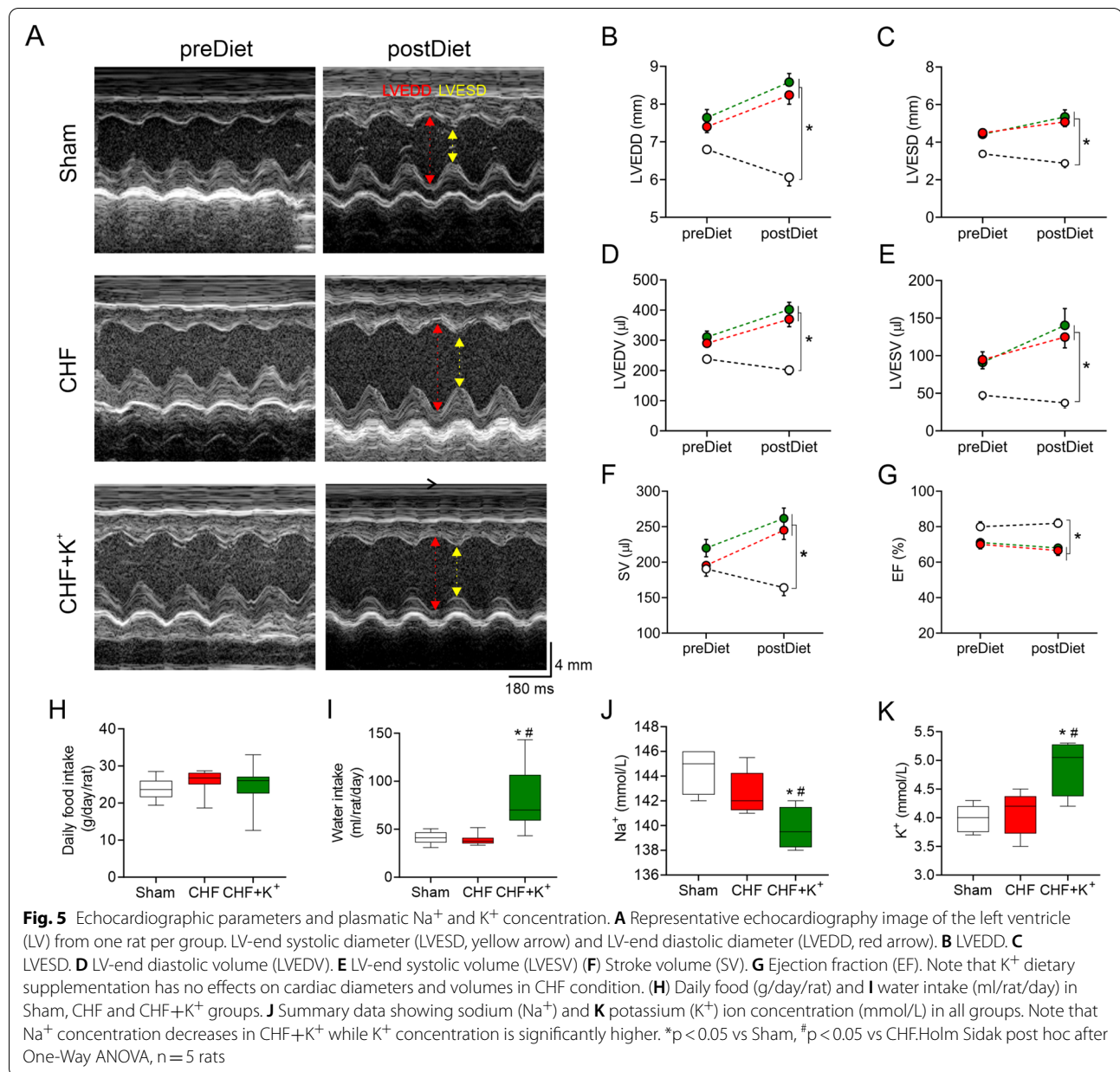
© The Author(s) 2022. **Open Access** This article is licensed under a Creative Commons Attribution 4.0 International License, which permits use, sharing, adaptation, distribution and reproduction in any medium or format, as long as you give appropriate credit to the original author(s) and the source, provide a link to the Creative Commons licence, and indicate if changes were made. The images or other third party material in this article are included in the article's Creative Commons licence, unless indicated otherwise in a credit line to the material. If material is not included in the article's Creative Commons licence and your intended use is not permitted by statutory regulation or exceeds the permitted use, you will need to obtain permission directly from the copyright holder. To view a copy of this licence, visit <http://creativecommons.org/licenses/by/4.0/>. The Creative Commons Public Domain Dedication waiver (<http://creativecommons.org/publicdomain/zero/1.0/>) applies to the data made available in this article, unless otherwise stated in a credit line to the data.

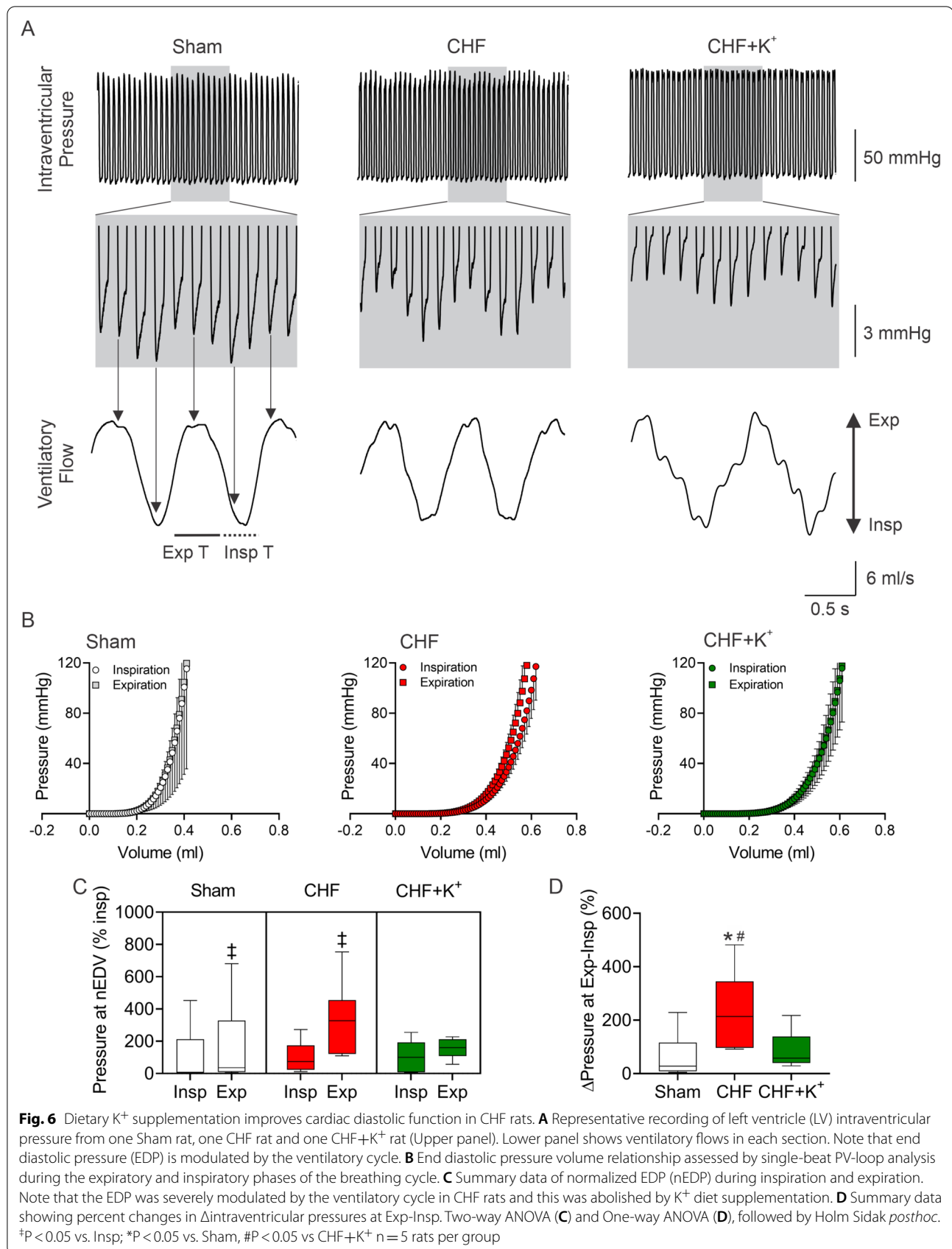












Author details

¹Laboratory of Cardiorespiratory Control, Department of Physiology, Pontificia Universidad Católica de Chile, Santiago, Chile. ²Centro de Excelencia en Biomedicina de Magallanes (CEBIMA), Universidad de Magallanes, Punta Arenas, Chile. ³Centro de Fisiología y Medicina de Altura, Departamento Biomedico, Facultad de Ciencias de la Salud, Universidad de Antofagasta, Antofagasta, Chile. ⁴Mechanisms of Myelin Formation and Repair Laboratory, Instituto de Ciencias Biomédicas, Facultad de Ciencias de Salud, Universidad Autónoma de Chile, Santiago, Chile. ⁵Facultad de Medicina y Ciencia, Universidad San Sebastián, Santiago, Chile. ⁶Centro de Envejecimiento y Regeneración (CARE), Pontificia Universidad Católica de Chile, Santiago, Chile.

Published online: 21 January 2022

Reference

1. Schwarz KG, Pereyra KV, Toledo C, Andrade DC, Díaz HS, Díaz-Jara E, Ortolani D, Rios-Gallardo A, Arias P, Las Heras A, Vera I. Effects of enriched-potassium diet on cardiorespiratory outcomes in experimental non-ischemic chronic heart failure. *Biol Res.* 2021;54(1):43.

Publisher's Note

Springer Nature remains neutral with regard to jurisdictional claims in published maps and institutional affiliations.